

BOATER'S GUIDE TO SAFETY AND SECURITY ZONES ENFORCED ON TAMPA BAY NAVIGABLE WATERS

Temporary/Interim Modifications to Existing Security Zones



SECURITY ZONE MODIFICATIONS:

The minor modifications that primarily reduce security zones within Tampa Bay have been implemented by a temporary rule. This rule is an **interim** measure until the Regulation is permanently amended in 33 CFR Part 165. The following changes to Security Zones are now enforced:

(For more info: <http://homeport.uscg.mil/stpetersburg>)

Sunshine Skyway Bridge: The security zone has been reduced. It includes all bridge structure columns, bases and dolphins from the north side to the south side. The only water includes the water in the main ship channel immediately under the main span of the bridge.

East Bay: The fixed security zones north of Pendola Point have been removed.

Hookers Point: The fixed security zone south of R.E.K. piers has been removed.

Rattlesnake: The fixed security zone now includes the landside Chemical Formulators facility on the peninsula.

TECO Big Bend: The fixed security zone now includes the cooling channel south of the power plant. (Technical correction)

Sector St Petersburg 727-824-7531 EMERGENCY CALL 911

SAFETY AND SECURITY MEASURES IN THE TAMPA BAY AREA

As a result of the terrorist attacks of 9/11 and the potential for continuing threats, the U.S. Coast Guard Captain of the Port (COTP) Tampa has taken measures to increase safety and security on the west coast of Florida. These measures are necessary to increase public safety and to reduce the threat of sabotage or terrorist acts.

These measures include the establishment of security zones under the authority of Titles 33 of the U.S. Code (OSC) Section 1226, 33 USC 1231 & 50 USC 191. As outlined in this pamphlet it is a good general rule to keep well away from all commercial vessels and facilities in Tampa Bay. This includes all tank vessels that handle or transport hazardous cargo, passenger vessels and terminals, Naval vessels, Coast Guard vessels and bases. The Coast Guard, state and local law enforcement agencies are looking to the boating public and maritime industry to comply with these regulations in a cooperative effort to maintain the safety and security of the waters of Tampa Bay and the surrounding area.

The following areas are designated as permanent and/or temporary Security Zones and as such shall be enforced by Federal, State and Local law enforcement authorities.

TAMPA BAY SAFETY ZONES

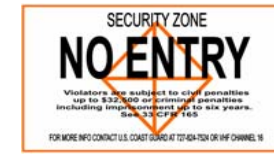
No vessel may transit within 1000 yards fore and aft and within the width of the channel of any ship or barge laden with Anhydrous Ammonia (NH3) or Liquefied Petroleum Gas (LPG) from Cut "F" Channel to berth in Tampa Bay, and Cut "J" Channel through Cut "K" Channel in Old Tampa Bay. When a laden LPG vessel departs Cut "K" Channel at buoy "11K", no vessel is permitted within 500 yards in any direction from the vessel to berth in Old Tampa Bay. The channels are indicated in this guide as follows:

NH3/LPG Ships: 
LPG Barge: 

TAMPA BAY SECURITY ZONES

No person or vessel may enter or remain in the safety or security zones noted in this guide, unless authorized by the COTP or his designated representative.

Example security zone signs:



PORT OF TAMPA FACILITIES

Fixed security zones have been established extending 50 yards from the shore or seawall and encompassing piers around facilities at the following locations: Sparkman Channel, Ybor Channel and portions of Garrison Channel. Portions of Garrison Channel. Port Sutton has been closed to vessel traffic.

PORT MANATEE, PORT OF ST PETERSBURG AND POWER PLANTS IN TAMPA BAY

A 50 yard Security Zone has been established from the shore or seawalls of Port Manatee, Port of St. Petersburg (Bayboro Harbor/USCG Sector St Petersburg – USCG North and South Moorings), Weedon Island and Big Bend Power Facilities, closing off all access and canals to those facilities.

A 500 yard Security Zone is **proposed** to surround Manbirtee Key immediately east of the access channel to Port Manatee. The proposal has been submitted for approval and public comment period will be provided.

CRYSTAL RIVER NUCLEAR POWER PLANT

All access to the channels approaching the Crystal River Nuclear Power Plant are closed to vessel traffic.

MACDILL AIR FORCE BASE

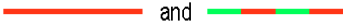

A permanent restricted area exists in all waters contiguous to MacDill AFB. This zone extends out into the Bay more than 1/2 mile from shore and shall not be breached without the permission of the Installation Commander. For details, contact the 6th Security Forces Squadron, MacDill AFB, 813-828-3322, 828-3323, 828-3324 or 828-4872.

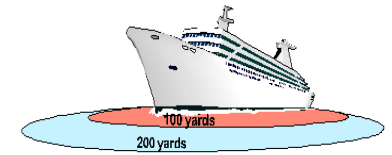
RATTLESNAKE & OLD PORT TAMPA

The industrial area opposite of the Gandy blvd boat ramp, behind and south of Imperial Yacht basin as well as areas east of R "10K" within the moorings of Old Port Tampa have been closed to vessel traffic.

CRUISE SHIPS, VESSELS TRANSPORTING OR TRANSFERRING HAZARDOUS CARGO

A 200 yard security zone exists surrounding all moored and transiting cruise ships and moored vessels carrying specific dangerous cargoes. No vessel or person is permitted within 100 yards of such vessel in Tampa Bay. Vessels encroaching within 200 yards must proceed at the minimum speed necessary to maintain safe navigation. The floating security zones for transiting cruise ships are indicated in this guide as:

 and 



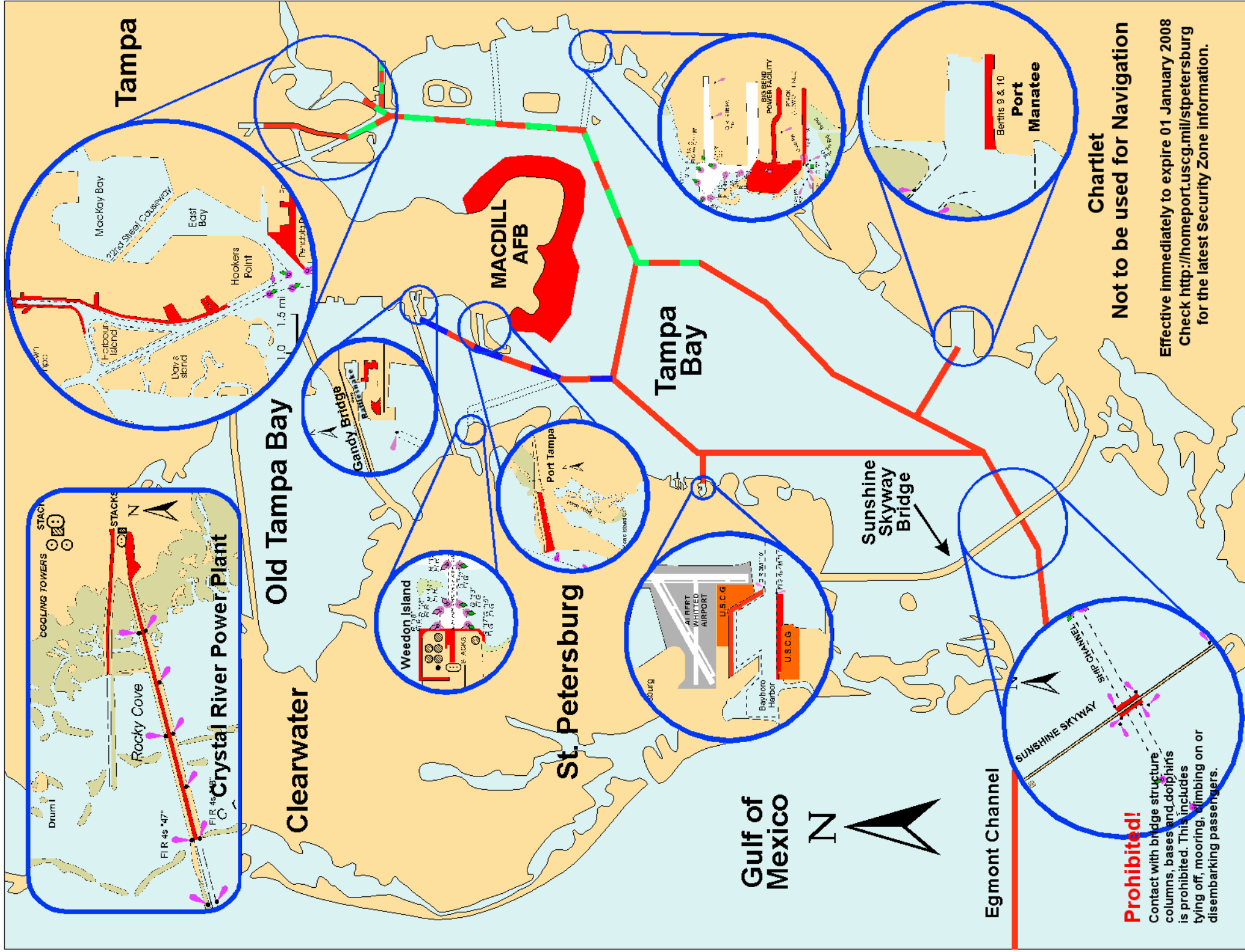
THE SUNSHINE SKYWAY BRIDGE

A security zone exists in the channel immediately under the main span of the Sunshine Skyway Bridge and includes the bridge structure columns, bases and dolphins from the North and to the South. Contact with these structures is prohibited to include tying off, mooring, climbing on or disembarking passengers. The security zone only applies to the waters in the main ship channel immediately under the main span of the bridge.



PENALTIES FOR VIOLATION

Pursuant to 33 CFR 165.33, any violation of the security zones described herein, is punishable by civil penalties (not to exceed \$32,500 per violation, where each day of a continuing violation is a separate violation), criminal penalties (imprisonment for not more than six years and a fine of not more than \$250,000), in rem liability against the offending vessel, and license sanctions.



Restricted Areas and Security Zones are Marked in RED

For additional information contact the
U.S. Coast Guard
Sector St. Petersburg at:

(727) 824-7531
or
<http://homeport.uscg.mil/stpetersburg>

If you witness or Suspect Terrorist Activities Call:
Americas Waterways Watch 877-24WATCH
877-249-2824
or
911
or contact the U.S. Coast Guard on:
VHF Ch 16

Moving Safety Zones & Moving Security Zones Within the Tampa Bay Ship Channel

- Cruise Ships
- Cruise Ships NH3 (Anhydrous Ammonia) LPG (Liquefied Petroleum Gas) Tank Ships
- LPG (Liquefied Petroleum Gas) Barges